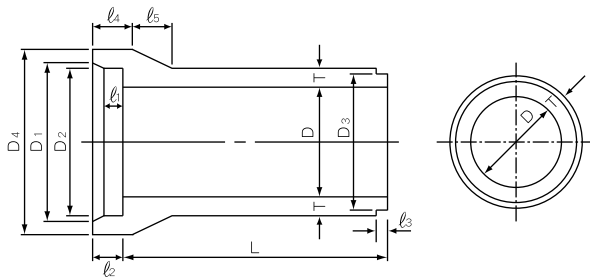
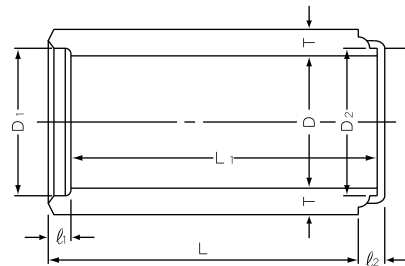


B形管



C形管



(日本工業規格)

区分	呼び径 D(mm)	厚さ T(mm)	有効長 L(mm)	参考重量 (kg)	価格(円)	
					1種	2種
B 型 管	150	26	2,000	77	5,500	6,800
	200	27	"	103	6,500	7,800
	250	28	"	131	8,000	9,500
	300	30	"	165	9,600	11,600
	350	32	"	204	11,900	14,000
	400	35	2,430	306	18,500	21,500
	450	38	"	373	22,000	25,900
	500	42	"	459	26,500	30,700
	600	50	"	660	37,700	43,400
	700	58	"	899	50,600	58,200
	800	66	"	1,170	64,200	74,000
	900	75	"	1,520	82,600	95,600
	1,000	82	"	1,850	100,300	115,800
C 型 管	1,100	88	2,430	2,190	120,800	137,600
	1,200	95	"	2,600	141,100	161,800
	1,350	103	"	3,190	174,900	197,700
	1,500	112	2,360	3,270	177,000	201,000
	1,650	120	"	3,850	204,000	234,000
	1,800	127	"	4,430	233,000	269,000
	2,000	145	2,360	5,640	306,000	343,000
	2,200	160	"	6,840	361,000	413,000
	2,400	175	"	8,170	433,000	498,000
	2,600	190	"	9,610	511,000	587,000
	2,800	205	"	11,200	599,000	686,000
	3,000	220	"	12,800	686,000	786,000

区分	呼び径 D(mm)	厚さ T(mm)	有効長 L(mm)	参考重量 (kg)	価格(円)	
					1種	2種
集 水 管	150	26	2,000	77	8,000	9,600
	200	27	"	103	9,300	11,200
	250	28	"	131	11,400	13,600
	300	30	"	165	13,700	16,300
	350	32	"	204	17,100	20,000
	400	35	2,430	306	26,500	30,600
	450	38	"	373	31,500	36,700
	500	42	"	459	37,600	43,300
	600	50	"	660	53,700	62,200
	700	58	"	899	75,000	86,700
	800	66	"	1,170	96,300	111,300
	900	75	"	1,520	124,000	143,300
	1,000	82	"	1,850	150,200	173,800

備考

1,100mm以上は外圧管（B型管1種・2種）価格の50%増となります。