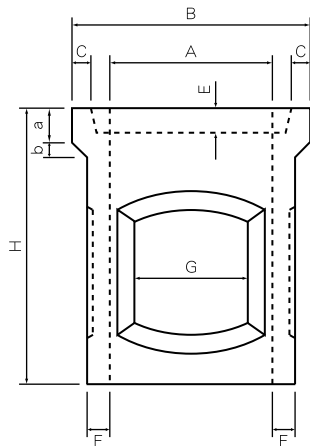
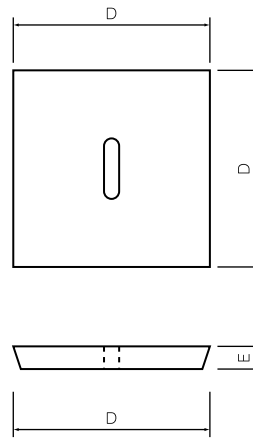


# 下水溜桧

桧

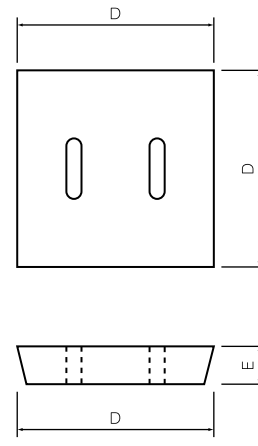


呼び名 200~800(落とし蓋式)

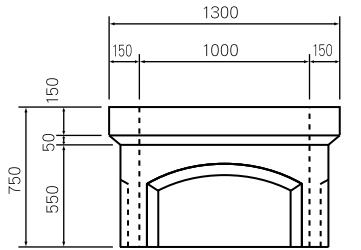


呼び名 200~350

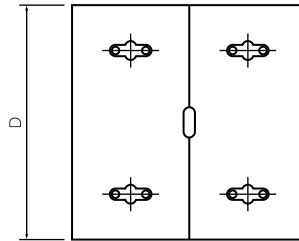
蓋



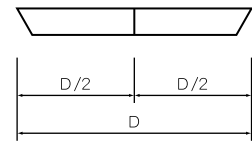
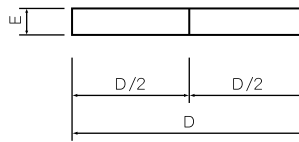
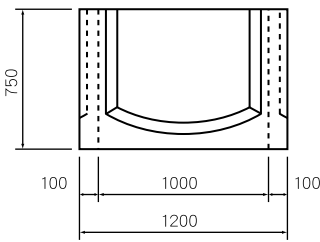
呼び名 400~600



呼び名 1000(二段・重ね蓋式)  
鉄筋は各々φ9仕様



呼び名 1000



呼び名 700~800

品番 (組)	呼び名	寸 法 (mm)										参考重量(kg)		価 格 (円/組)	
		A	B	C	D	E	F	G	H	a	b	一組	ふた/枚		
00606101	下水溜桧	200	200	300	29	240	30	30	130	350	50	20	23	4	2,490
00606104		250	250	350	30	285	35	30	150	400	50	20	39	7	3,000
00606107		300	300	410	35	335	40	30	200	450	55	25	51	9	3,620
00606110		350	350	480	43	390	40	35	250	550	60	30	75	13	4,540
00606113		400	400	550	50	450	50	40	270	640	70	40	120	23	6,550
00606116		450	450	600	50	495	55	50	350	700	70	25	159	29	10,610
00606120		500	500	670	60	545	65	50	370	750	80	35	205	41	11,880
00606123		600	600	820	75	660	65	55	410	900	85	55	344	62	19,050
00560126		700	700	970	85	790	70	65	570	1200	110	80	616	53	30,930
00560130		800	800	1080	85	900	100	65	670	1300	130	75	839	93	50,030
00560134	1000	1000	1300	-	1300	150	100	840	1500	150	50	1835	292	89,600	